

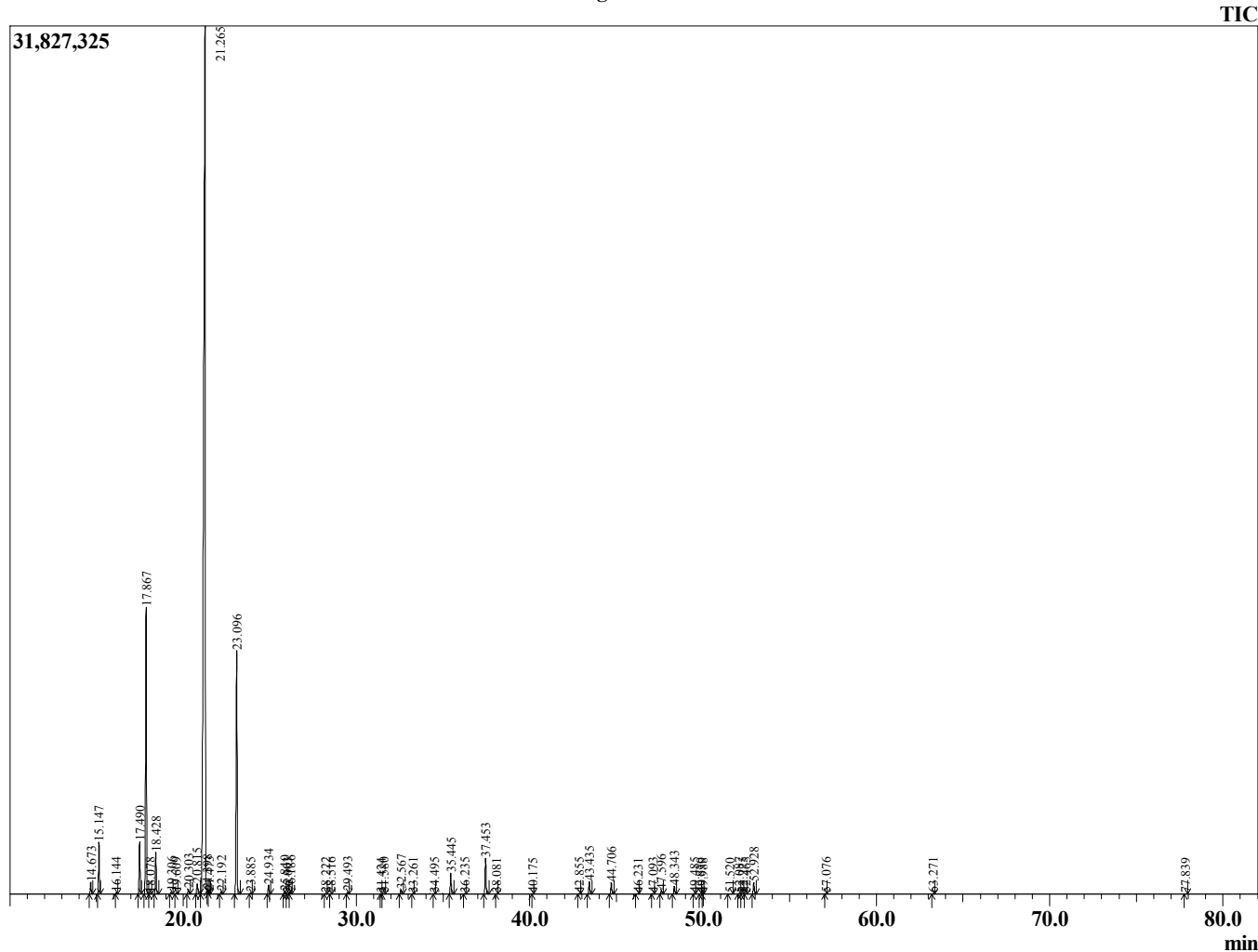
Sample Information

Analyzed : 7/25/2019 5:13:01 AM
 Sample Type : Essential Oil
 Sample Name : Citrus limon
 Injection Volume : 0.10

Lemon
 ITN38-NW
 Italy



Chromatogram Citrus limon



R.Time	Name	Area%
14.673	alpha-Thujene	0.41
15.147	alpha-Pinene	1.80
16.144	Camphene	0.05
17.490	Sabinene	1.93
17.867	beta-Pinene	11.55
18.078	6-Methyl-5-hepten-2-one	0.01
18.428	Myrcene	1.53
19.306	Octanal	0.07
19.609	alpha-Phellandrene	0.03
20.303	alpha-Terpinene	0.19
20.815	para-Cymene	0.49
21.265	Limonene	65.40
21.398	1,8-Cineole	0.02
21.473	Z-beta-Ocimene	0.02
22.192	E-beta-Ocimene	0.10
23.096	gamma-Terpinene	10.50
23.885	cis-Sabinene hydrate	0.04
24.934	Terpinolene	0.37
25.840	Linalool	0.09
26.003	trans-Sabinene hydrate	0.03
26.186	Nonanal	0.09
28.222	cis-Limonene oxide	0.02
28.516	trans-Limonene oxide	0.01
29.493	Citronellal	0.08
31.424	trans-Isocitral	0.01
31.580	Terpinen-4-ol	0.03
32.567	alpha-Terpineol	0.18
33.261	Decanal	0.03
34.495	Nerol	0.03
35.445	Neral	0.92
36.235	Geraniol	0.02
37.453	Geranial	1.57
38.081	Perillaldehyde	0.01
40.175	Undecanal	0.01
42.855	Citronellyl acetate	0.03
43.435	Neryl acetate	0.55
44.706	Geranyl acetate	0.50
46.231	Tetradecane	0.01
47.093	cis-alpha-Bergamotene	0.02
47.596	beta-Caryophyllene	0.15
48.343	trans-alpha-Bergamotene	0.34
49.485	E-beta-Farnesene	0.02
49.830	alpha-Humulene	0.01
49.988	beta-Santalene	0.01
51.520	Z,E-alpha-Farnesene	0.02
52.087	Valencene	0.05
52.275	Bicyclogermacrene	0.02
52.465	Z-alpha-Bisabolene	0.03
52.928	beta-Bisabolene	0.52
57.076	Spathulenol	0.02
63.271	alpha-Bisabolol	0.02
77.839	Citropten	0.02
		100.00